

1

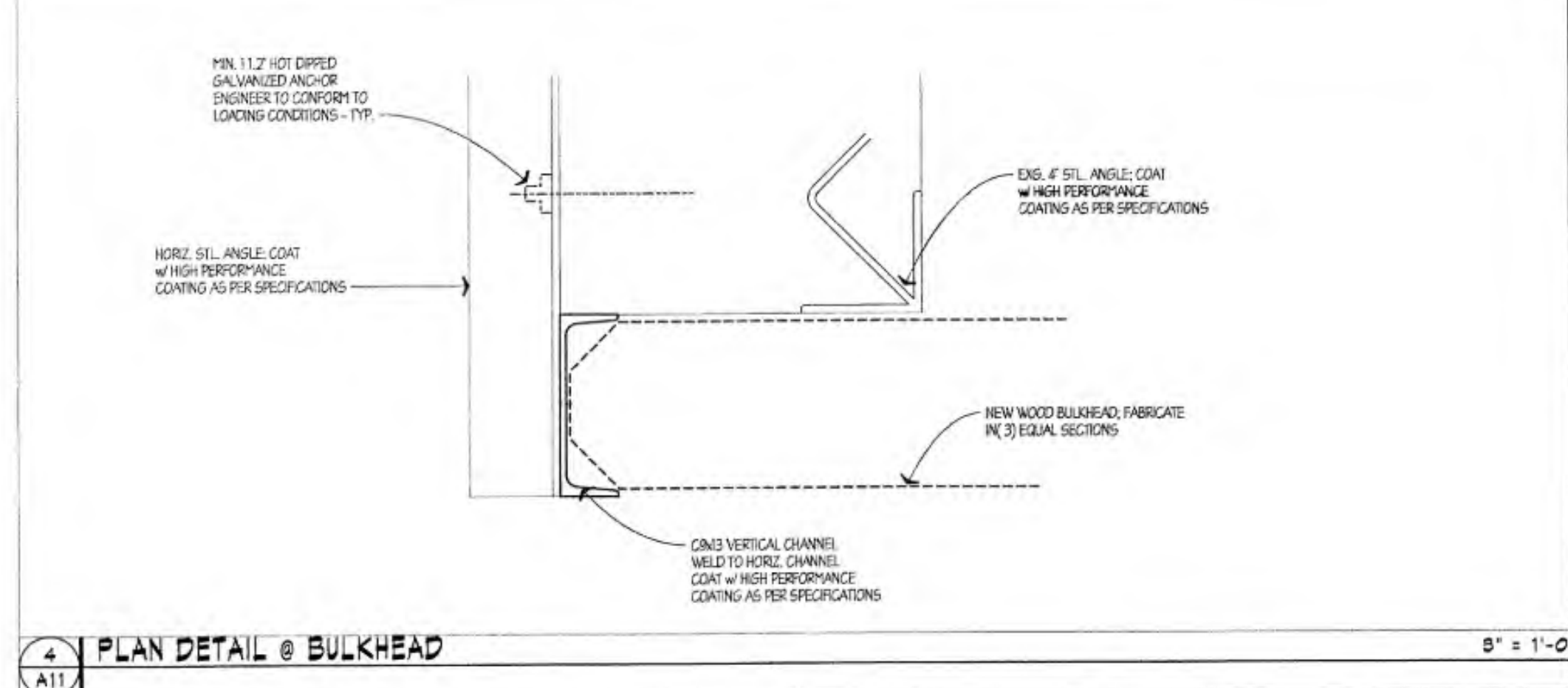
2

3

4

C

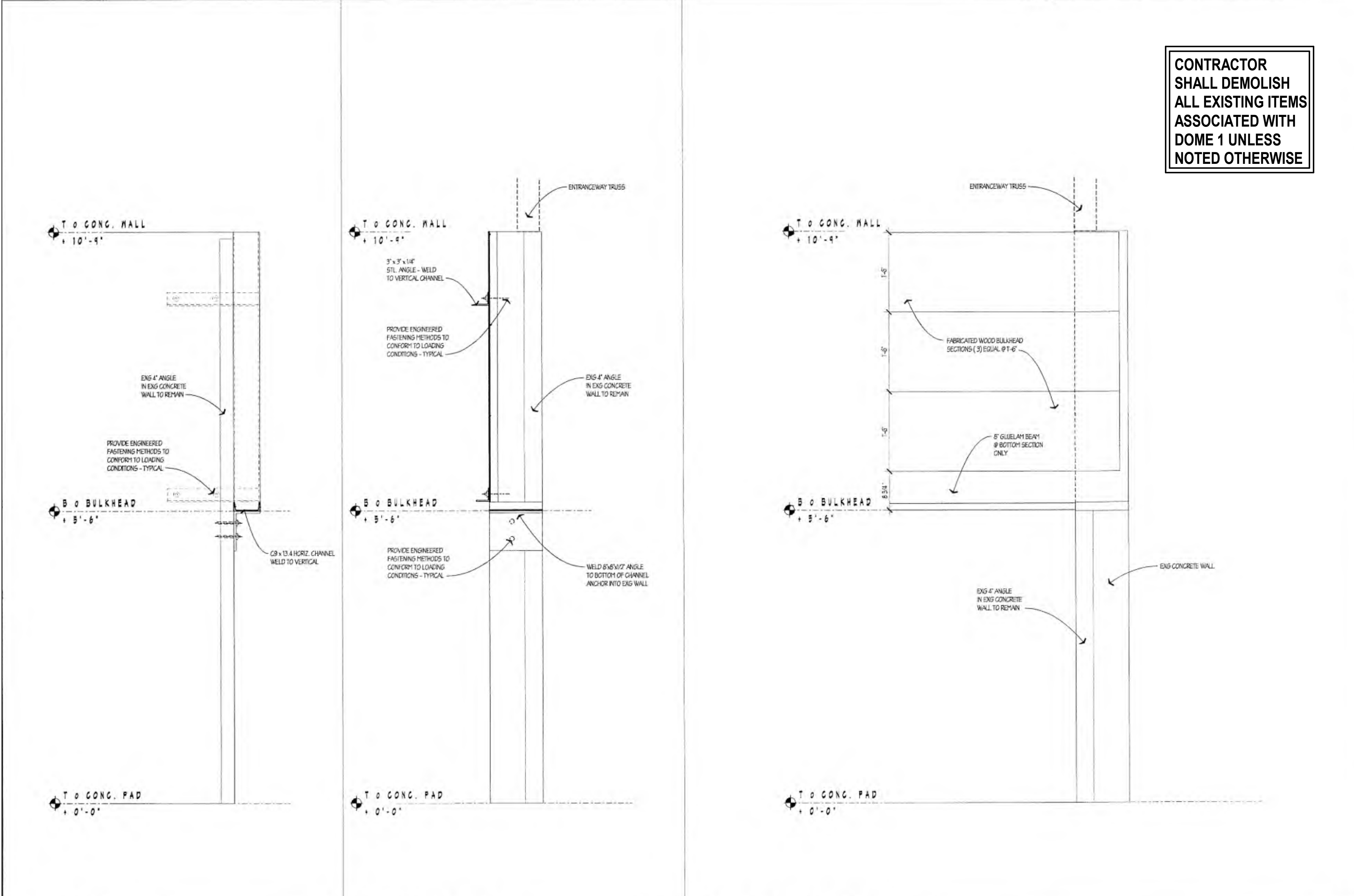
C



4 PLAN DETAIL @ BULKHEAD 5\"/>

B

B



1 SECTION @ BULKHEAD 1\"/>

2 SECTION @ BULKHEAD 1\"/>

3 PARTIAL ELEVATION @ BULKHEAD 1\"/>

CONTRACTOR SHALL DEMOLISH ALL EXISTING ITEMS ASSOCIATED WITH DOME 1 UNLESS NOTED OTHERWISE

- GENERAL STRUCTURAL NOTES**
1. THIS STRUCTURAL DESIGNATED SYSTEM IS A PERFORMANCE BASED DESIGN. IT REQUIRES THE COMPLETE DESIGN BY A NEW YORK STATE LICENSED STRUCTURAL ENGINEER WITH DRAWINGS, ACCOMPANYING SPECIFICATIONS AND CALCULATIONS TO SHOW COMPLIANCE FOR LOADING AS INDICATED, SNOW LOADING FOR 90 LBS. AND WINDLOADING - UPLIFT AND SIDE PRESSURE FOR 110 M.P.H.
 2. ALL EXPOSED STEEL COMPONENTS INTERIOR AND EXTERIOR, STRUCTURAL AND NON-STRUCTURAL ARE TO BE COATED WITH A HIGH PERFORMANCE COATING PER SPECIFICATIONS.
 3. CONFORM SILL BEAM DESIGN TO THE TOLERANCES OF THE ORIGINAL CONCRETE WALL.
 4. ALL STEEL SHALL CONFORM TO ASTM A36 STEEL OR BETTER.
 5. ALL STEEL SHALL HOT DIP GALVANIZED AFTER FABRICATION.
 6. PROPERLY ENGINEER ALL CHANNELS, FRAMES, PLATES, BOLTS AND CONNECTIONS FOR LOADING CONDITIONS AS INDICATED.

5 GENERAL NOTES NO SCALE



C&S Architects, Engineers & Landscape Architect, PLLC
 499 Col. Eileen Collins Blvd.
 Syracuse, New York 13212
 Phone: 315-455-2000
 Fax: 315-455-9667
 www.cscos.com



**OSWEGO, NY
 GRAIN HANDLING SYSTEMS
 IMPROVEMENT PROJECT
 PORT OF OSWEGO**

MARK	DATE	DESCRIPTION
REVISIONS		

PROJECT NO: 301.031.001
 DATE: JULY 10, 2020
 DRAWN BY:
 DESIGNED BY:
 CHECKED BY:
 NO ALTERATION PERMITTED HEREON EXCEPT AS PROVIDED UNDER SECTION 7209 SUBDIVISION 2 OF THE NEW YORK EDUCATION LAW

**EXISTING BULKHEAD
 DETAILS-FOR
 REFERENCE**

AD-505

1

2

3

4

- ALL ELECTRICAL WORK SHALL CONFORM TO ALL STATE, LOCAL, AND NATIONAL ELECTRICAL CODES.
- ELECTRICAL CHARACTERISTICS SHALL BE VERIFIED WITH EQUIPMENT MANUFACTURER.
- ITEMS OF SPECIFIC MANUFACTURERS SHALL BE INSTALLED IN STRICT ACCORDANCE WITH MANUFACTURER'S PRINTED INSTRUCTIONS AND/OR MANUFACTURER'S REPRESENTATIVE'S DIRECTIONS.
- THE CONTRACTOR SHALL FIELD VERIFY ALL LOCATIONS AND DIMENSIONS SHOWN ON DRAWINGS
- ALL CONDUIT AND WIRING SCHEDULES SHALL BE VERIFIED BEFORE INSTALLATION.
- THE ELECTRICAL CONTRACTOR SHALL COORDINATE THE INSTALLATION OF ALL EQUIPMENT WITH OTHER CONTRACTORS.
- ALL AREAS DISTURBED BY WORK SHALL BE RESTORED TO A CONDITION EQUAL TO OR BETTER THAN ORIGINAL AS DETERMINED BY THE ENGINEER.
- THE CONTRACTOR SHALL PROVIDE RACEWAYS, WIRING, AND CONNECTIONS FOR ALL CONTROL CIRCUITS AND INTERLOCK.
- ALL ELECTRICAL CONDUIT AND CONDUCTORS DISCONNECTED AND NOT TO BE REUSED SHALL BE REMOVED.
- CONTRACTOR SHALL FIELD VERIFY ALL EXISTING CONDITIONS BEFORE STARTING WORK. IF ONLY A PORTION OF AN EXISTING CIRCUIT IS BEING REMOVED FOR DEMOLITION, CONTINUITY SHALL BE MAINTAINED TO THE REST OF THE REMAINING CIRCUIT.
- ALL BRANCH CIRCUIT CONDUCTORS SHALL BE #12AWG UNLESS OTHERWISE SHOWN.
- ALL BRANCH CIRCUITS SHALL CONSIST OF 2 CONDUCTORS PLUS GROUND, UNLESS OTHERWISE SHOWN.

ELECTRICAL SYMBOL LIST

	EXISTING WORK LINETYPE
or 	DEMOLITION WORK LINETYPES
	NEW WORK LINETYPE
	SPECIAL RECEPTACLE
	SINGLE POLE SWITCH, UNLESS NOTATION INDICATES OTHERWISE.
	1'x4' LUMINAIRE, LETTER DENOTES TYPE, SEE LUMINAIRE SCHEDULE NL = NIGHT LIGHT
	INDICATES WALL MOUNTED LUMINAIRE, LETTER DENOTES TYPE, SEE LUMINAIRE SCHEDULE
	UNDERGROUND ELECTRIC
	METER

ELECTRICAL CONTROLS SYMBOL LIST

	CONNECTION POINT OR CABLE SPLICE
	TRANSFORMER
	FUSED DISCONNECT SWITCH
	BOLTED PRESSURE SWITCH w/FUSE
	DISCONNECT SWITCH (TICKS INDICATE NUMBER OF POLES)
	CIRCUIT BREAKER (TICKS INDICATE NUMBER OF POLES)
	GROUND
	FUSED DISCONNECT SWITCH
	PANEL BOARD, REFER TO PANEL BOARD SCHEDULE

AC	ABOVE COUNTER
ACCU	AIR COOLED CONDENSING UNIT
AFB	ABOVE FINISHED FLOOR
AFG	ABOVE FINISHED GRADE
AU	AT UNIT
BFG	BELOW FINISHED GRADE
CDP	CLOCK DISTRIBUTION PANEL
CH	CHILLER
CLL	CONTRACT LIMIT LINE
CT	CURRENT TRANSFORMER
CTB	CLOCK TERMINAL BOX
DP	DISTRIBUTION PANEL
DPM	DISTRIBUTION PANEL MAIN
EF	EXHAUST FAN
EMT	ELECTRIC METALLIC TUBING
EP	EXPLOSION PROOF
FA	FIRE ALARM
FACP	FIRE ALARM CONTROL PANEL
FC	FAN COIL
FD/SD	FIRE DAMPER / SMOKE DETECTOR
GFI	GROUND FAULT INTERRUPTER
GND	GROUND
JB	JUNCTION BOX
KA	KILO AMP
KV	KILO VOLT
KVA	KILO VOLT AMP
KWH	KILO WATT - HOUR DEMAND METER
LP	LIGHTING PANEL
NC	NORMALLY CLOSED
NEMA	NATIONAL ELECTRICAL MANUFACTURERS ASSOCIATION
NO	NORMALLY OPEN
PB	PULL BOX
PF	POTENTIAL TRANSFORMER
PV	PANEL UNIT VENTILATOR
REM	REMARKS
RGS	RIGID GALVANIZED STEEL CONDUIT
UV	UNIT VENTILATOR
VFD	VARIABLE FREQUENCY DRIVE
WP	WEATHER PROOF

C1 ELECTRICAL GENERAL NOTES

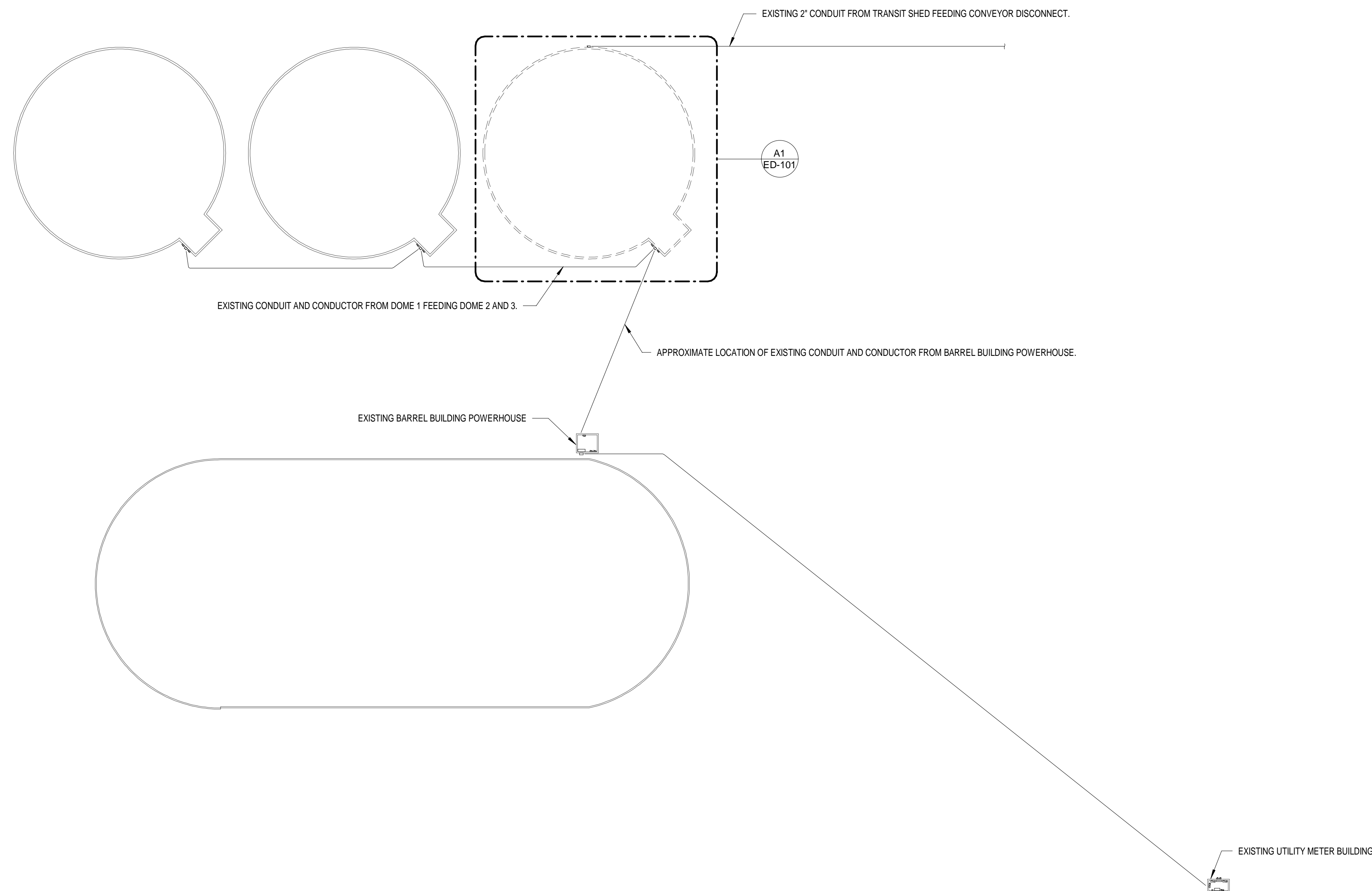
SCALE: NOT TO SCALE

C2 ELECTRICAL SYMBOLS

SCALE: NOT TO SCALE

C4 ELECTRICAL ABBREVIATIONS

SCALE: NOT TO SCALE



A2 SITE DEMOLITION PLAN

SCALE: 1" = 40'-0"



C&S Engineers, Inc.
 499 Col. Eileen Collins Blvd.
 Syracuse, New York 13212
 Phone: 315-455-2000
 Fax: 315-455-9667
 www.cscos.com



**PORT OF OSWEGO
 OSWEGO, NY
 GRAIN HANDLING SYSTEMS
 IMPROVEMENT PROJECT**

MARK	DATE	DESCRIPTION
REVISIONS		
PROJECT NO:	301.031.001	
DATE:	JULY 10, 2020	
DRAWN BY:	S.R. PINE	
DESIGNED BY:	S.R. PINE	
CHECKED BY:	S.H. SHOVA	

NO ALTERATION PERMITTED HEREON EXCEPT AS PROVIDED UNDER SECTION 7209 SUBDIVISION 2 OF THE NEW YORK EDUCATION LAW

ELECTRICAL SITE DEMOLITION PLAN

ED-100

1

2

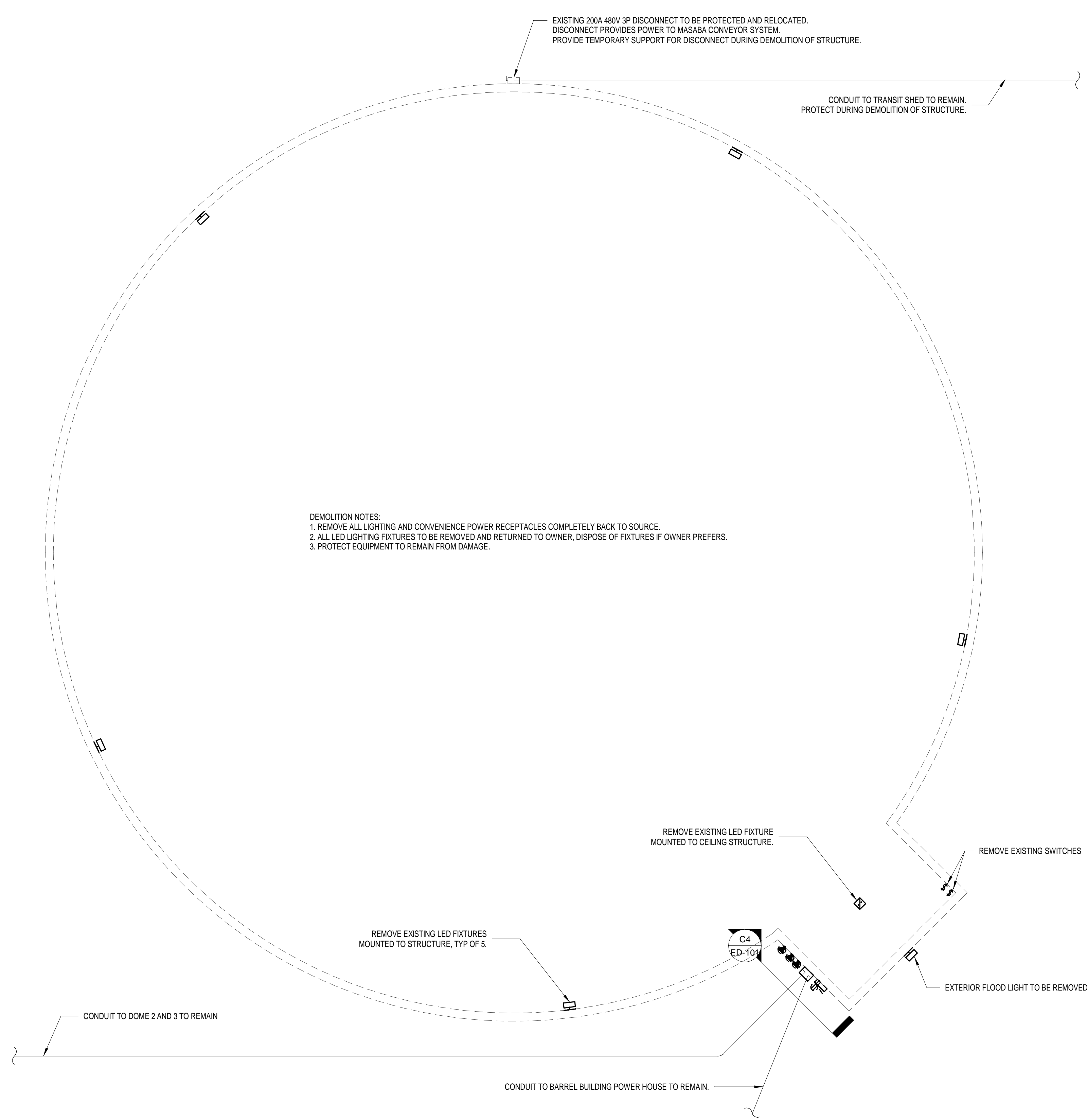
3

4

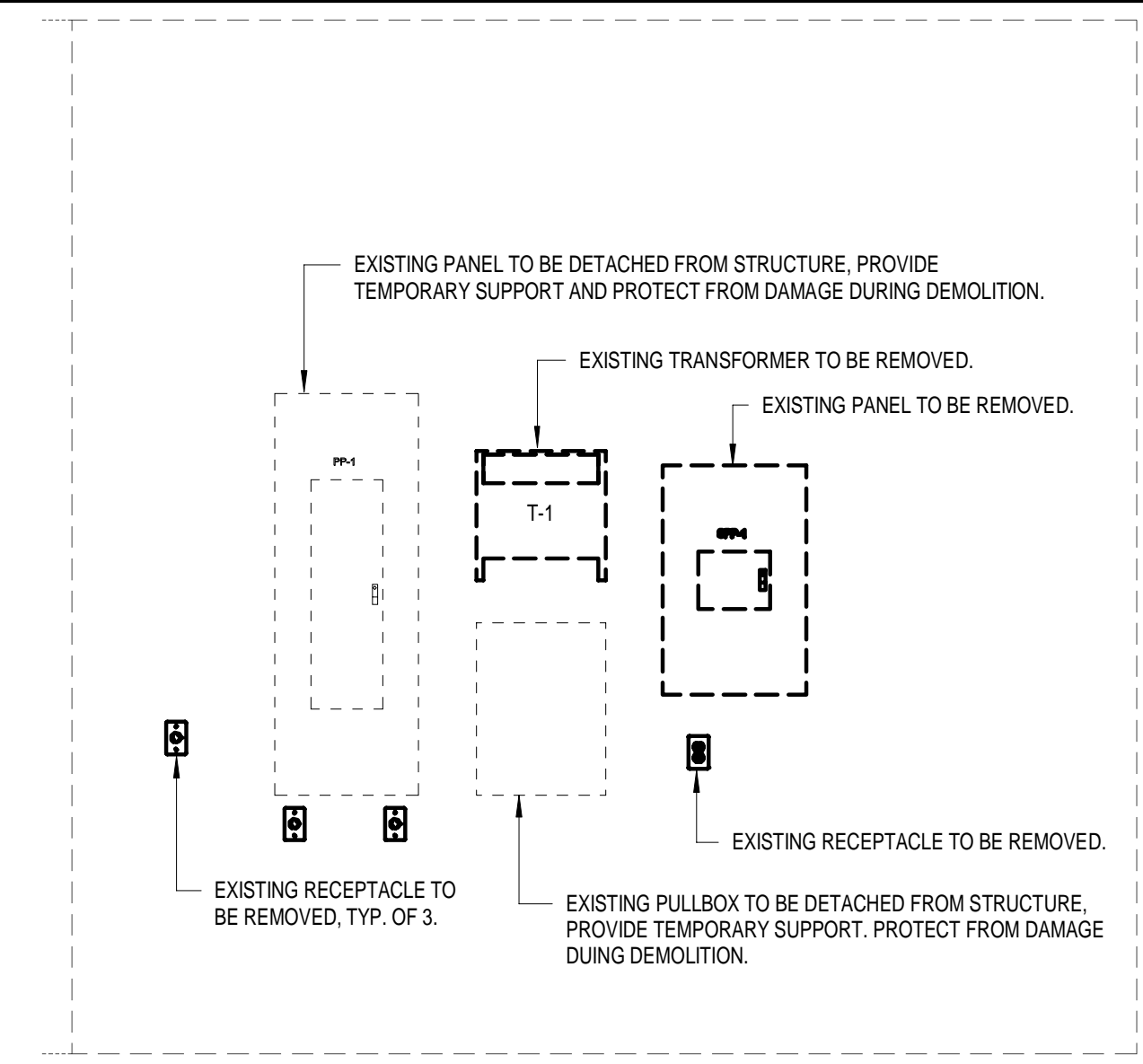
C

B

A



C4 DOME 1 SOUTH WALL ELECTRICAL SECTION
 SCALE: 1/2" = 1'-0"



C&S Engineers, Inc.
 499 Col. Eileen Collins Blvd.
 Syracuse, New York 13212
 Phone: 315-455-2000
 Fax: 315-455-9667
 www.cscos.com



**PORT OF OSWEGO
 OSWEGO, NY
 GRAIN HANDLING SYSTEMS
 IMPROVEMENT PROJECT**

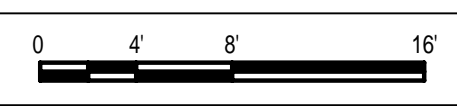
MARK	DATE	DESCRIPTION
REVISIONS		
PROJECT NO:	301.031.001	
DATE:	JULY 10, 2020	
DRAWN BY:	S.R. PINE	
DESIGNED BY:	S.R. PINE	
CHECKED BY:	S.H. SHOVA	

NO ALTERATION PERMITTED HEREON EXCEPT AS PROVIDED UNDER SECTION 7209 SUBDIVISION 2 OF THE NEW YORK EDUCATION LAW

DOME 1 DEMOLITION PLAN

ED-101

A1 SITE DEMOLITION PLAN - Callout 1
 SCALE: 1/8" = 1'-0"



1

2

3

4

1

2

3

4

C

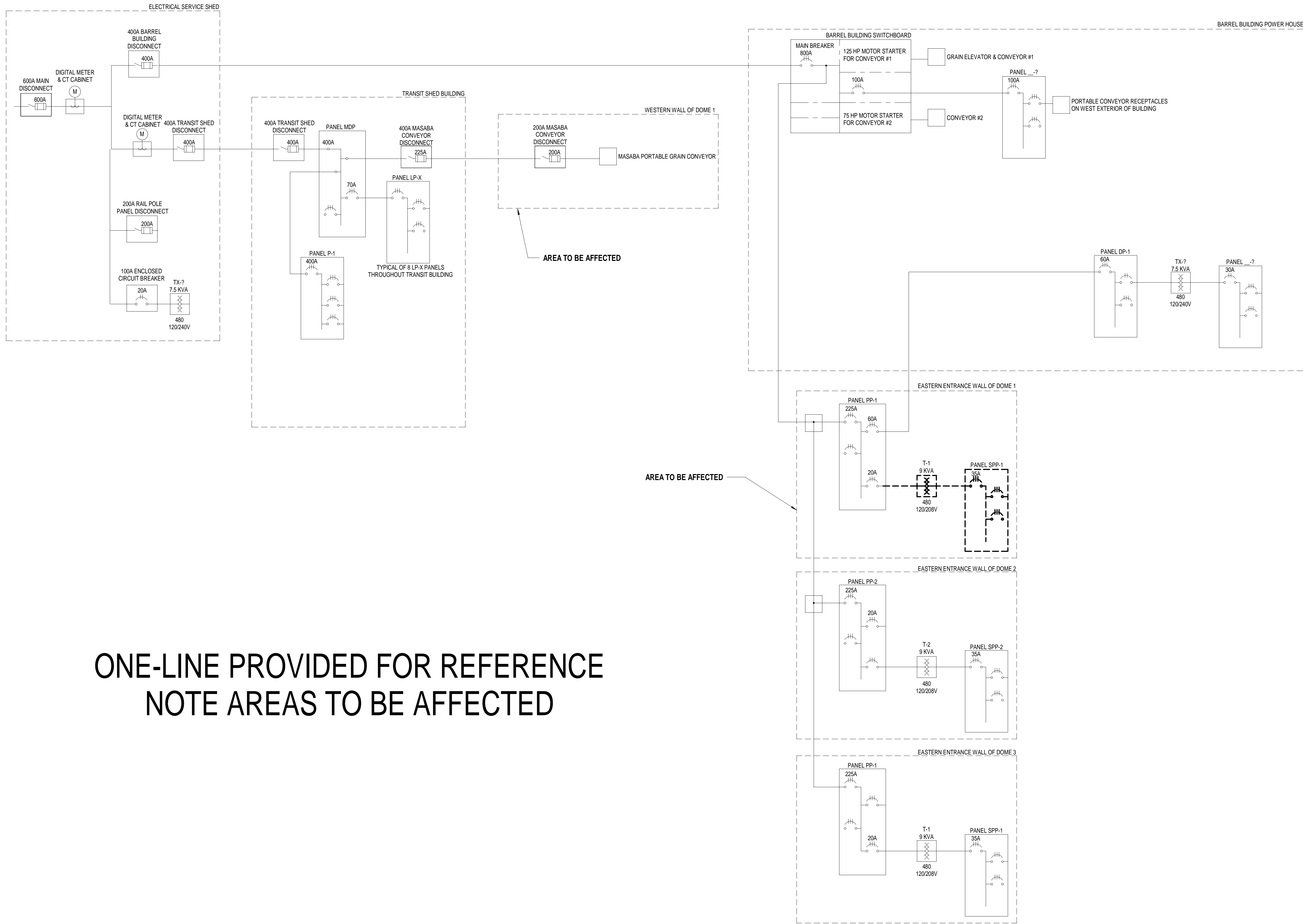
B

A

C

B

A



ONE-LINE PROVIDED FOR REFERENCE
NOTE AREAS TO BE AFFECTED



C&S Engineers, Inc.
499 Col. Eileen Collins Blvd.
Syracuse, New York 13212
Phone: 315-455-2000
Fax: 315-455-9667
www.cscos.com



PORT OF OSWEGO
OSWEGO, NY
GRAIN HANDLING SYSTEMS
IMPROVEMENT PROJECT

MARK	DATE	DESCRIPTION
REVISIONS		
PROJECT NO:		301.031.001
DATE:		JULY 10, 2020
DRAWN BY:		S.R. PINE
DESIGNED BY:		S.R. PINE
CHECKED BY:		S.H. SHOVA

NO ALTERATION PERMITTED HEREON
EXCEPT AS PROVIDED UNDER SECTION
7209 SUBDIVISION 2 OF THE NEW YORK
EDUCATION LAW

EXISTING ONE-LINE
DEMOLITION PLAN

ED-601